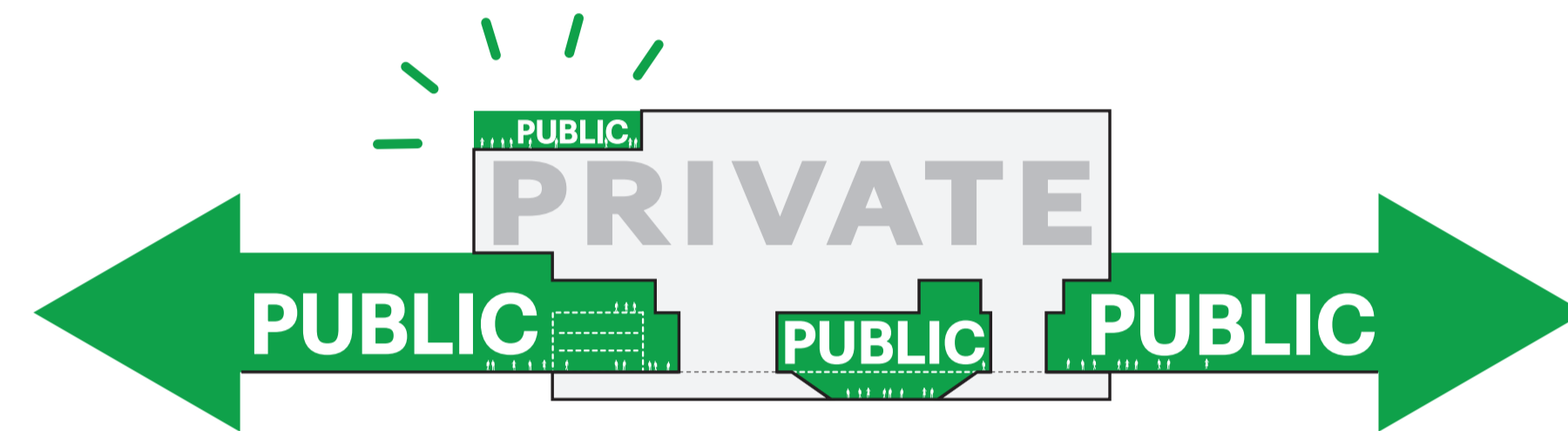


1 Elielinsaaristo

Eliel's living room

How to create a new business district, that will introduce a new level of activity and commercial use to the station area, whilst at the same time acknowledging the importance of open, dynamic, and green urban spaces in the city center?

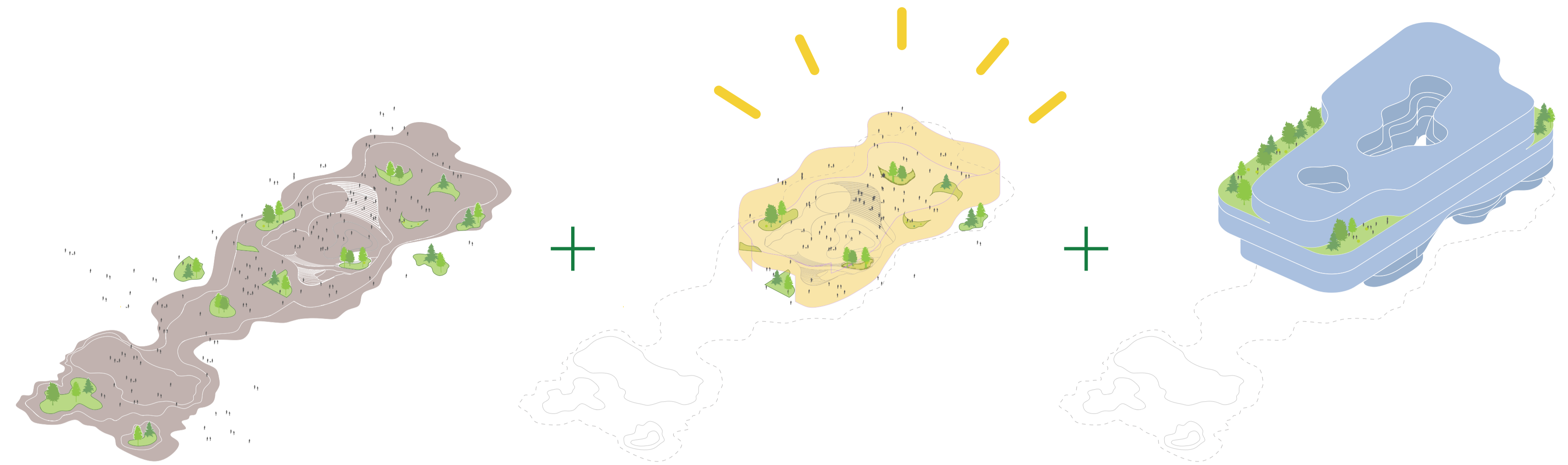
With our proposal, we would like to show that both requirements are not necessarily conflicting but can rather strengthen each other, if priorities are set straight: it is important to define a clear boundary between what is public and what is private.



We believe that the entire competition area should be transformed into a publicly accessible urban space on ground level. It will allow for a continuous urban landscape that will accommodate existing and new pedestrian flows across the area, new bicycle routes and new connections to the underground level.

The new volume for business purposes will be placed above the public domain and will help to create a shelter for the public zone below; in winter, the space is protected by a glass layer, creating a semi-climatized greenhouse condition inside. In summer, the glass façade can be opened up in different locations and the indoor area turns into a shaded plaza.

The covered public space will be a new meeting point in the city. It will be a functional hub for people in transit, travelling between different modes of transport, moving between street level and underground levels, parking their bicycles or cars, going to work in the city and taking the train back home. But more importantly, the space will also be a green urban living room, a destination where people are invited to stop moving, enjoy a cup of coffee, have lunch, meet other people.



Green urban archipelago

Eliel's living room

Business hub

The covered public space will be a new meeting point in the city.



2 Elielinsaaristo

Eliel's archipelago

Wild nature is even more precious and crucial for our well-being in an increasingly urbanized world.



3 Elielinsaaristo

A pedestrian-friendly carpet

Without a doubt, landscaping is a crucial ingredient of the new public space. Helsinki is known for its unique nature identity, with tall trees and water always within reach. We believe in a future where the center of Helsinki, to an even greater extent, offers a unique nature setting for both its residents and visitors alike. A future where wild nature is even more precious and crucial for our well-being in an increasingly urbanized world. In our vision Elielinsaaristo will be a frontrunner in showcasing local nature and biodiversity values, connected to the larger green network to the north. We will bring a selection of the Finnish forest on site, which thus will transform from a grey infrastructure hub into a welcoming and distinctive green urban archipelago with native plant species forming a robust ecosystem, for everyone to enjoy.

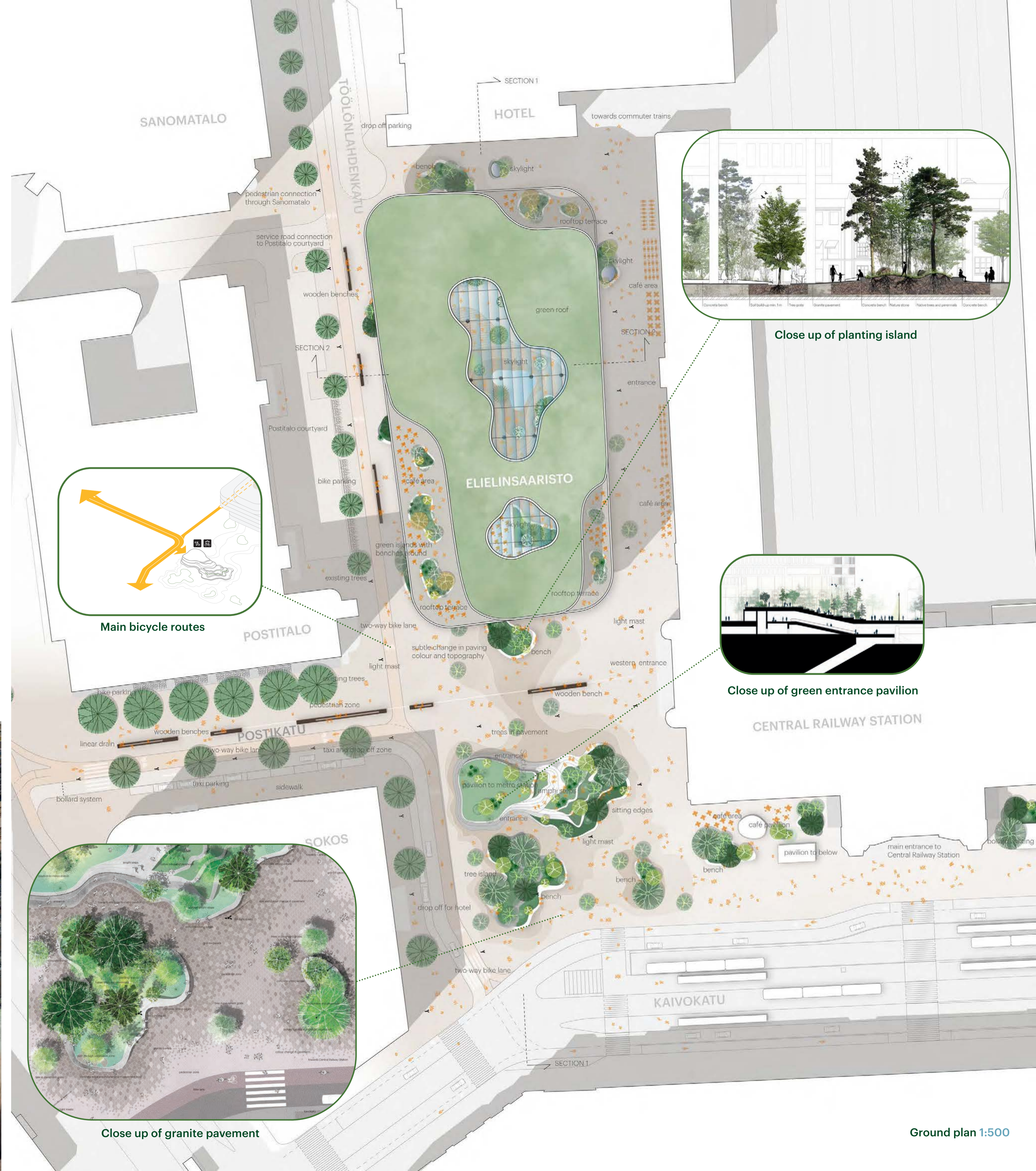
We envision a truly green, pedestrian-friendly, and high-quality public space that supports the values important for the site: social values, to make the urban space a vibrant and welcoming yet safe place; city nature, that provides the area with amenity values for visitors as well as necessary ecosystem services and utility values. And lastly the diverse economic values that nature-based design brings; studies show that access to green environments improve general well-being, efficiency, and business. An attractive environment invites people for a longer stay. The busy transport hub setting needs a synergy between functional landscape and emotional nature, with a strong local connection. An amplified synergy between the social, biological, and economic circuits – the result being a holistic approach where both pedestrian flow, bike traffic, commercial activities, events, and every

day visits can coexist in harmony in an active and dynamic place.

The archipelago concept with dense planting islands and a few solitary trees in the paving enables good and safe space and wayfinding for pedestrian flow all over the site and through the new building, while the taxi drop-off zone and two-way bike traffic are separated into specifically marked lanes with a colour change in the pavement. A colour gradient in the grey browned granite paving depicts the curvy lines of an archipelago, with a very light rise in the middle of Elielinsaaristo, enabling pedestrians to experience the subtle change in topography when entering the “island”.

The hexagonal paving pattern consists of three different paver sizes, and it is laid out all over the site as a carpet from facade to facade, ensuring full accessibility. The important sightlines along Postikatu and from the Sokos department store by Kaivokatu towards the Central Railways Station are clearly articulated in the landscape as barrier free space. Linear, wooden benches mark the historic sightline along Postikatu towards the western Railway Station entrance, while planting islands with undulating concrete benches on the zones in between busy flowlines invite visitors to stay and linger. The landscape pavilion with travellers to the underground welcomes people to take a rest or meet for an event on the sitting edges surrounded by greenery. Tall light masts standing in linear lines ensure easy wayfinding, good overall lighting conditions and accessibility, while low bollards in the planting beds highlight the vegetation with atmospheric light.

An attractive environment invites people for a longer stay.





This urban living room will accommodate all kinds of uses and activities that benefit a dynamic and attractive character of the space. We imagine the space could resemble a park, with trees and gardens as well as areas that can be used as a market, a café, a children's playground, or a festival area. The space can accommodate conferences, exhibitions, and performances.



Conference rooms



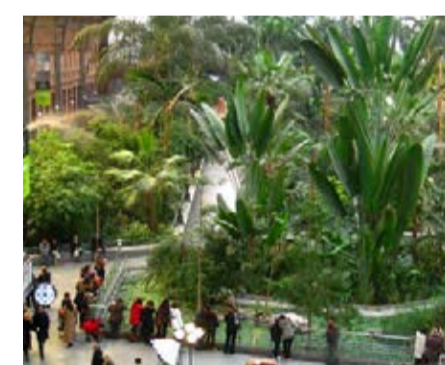
Art installations



Ice skating rink



Market



Park



Amphitheater



Area section 1:500

5 Elielinsaaristo

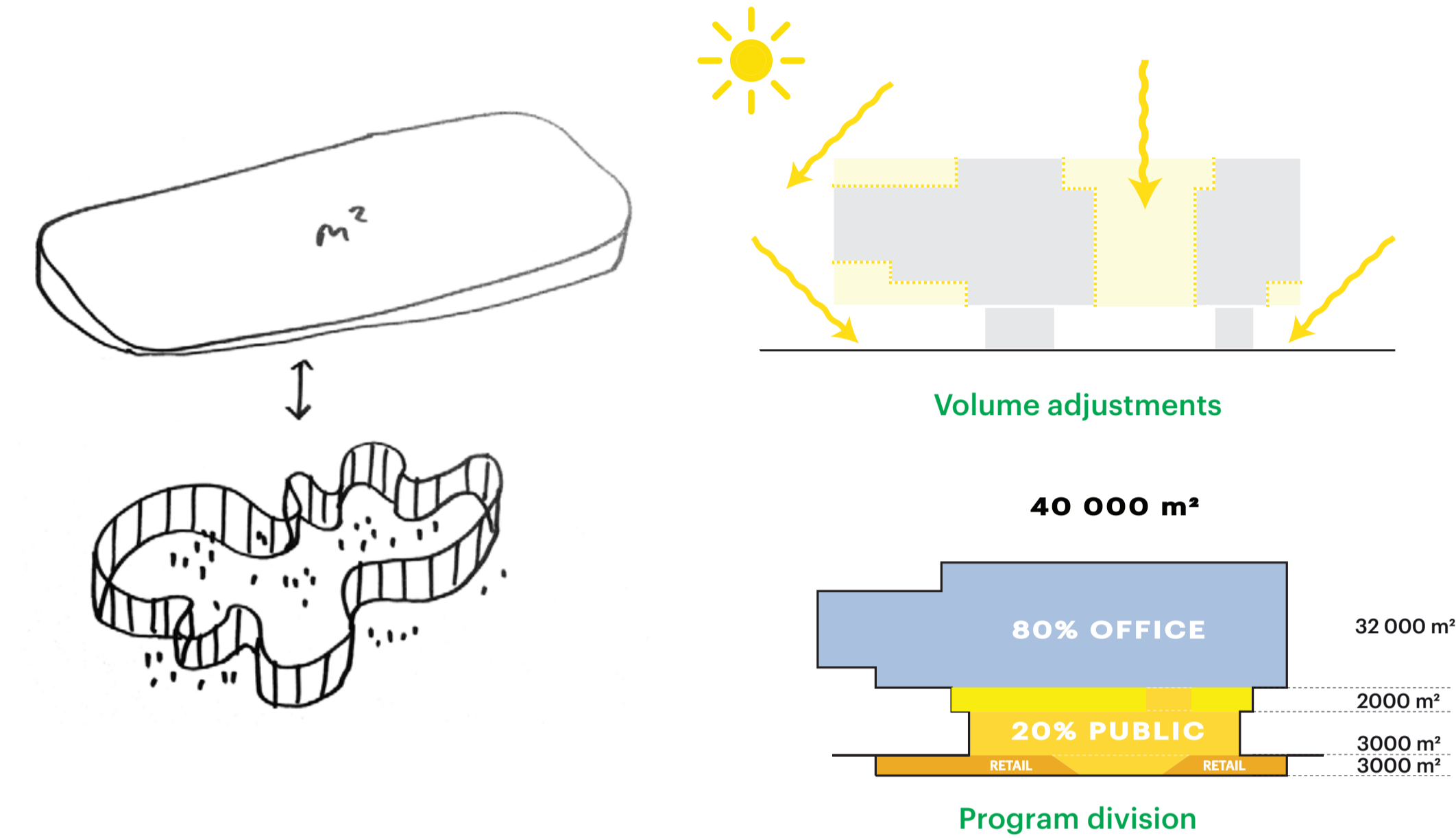
A pragmatic icon

The architectural design of the building is inspired by the characteristics of Finnish architecture, many of which are visible in the neighboring buildings: functionality combined with elegant curves, choice of materials with a distinctive quality and expression, a rhythm of windows and a solid appearance that still manages to evoke a certain lightness and transparency. It aims to seek a dialogue with the valuable heritage of Helsinki.

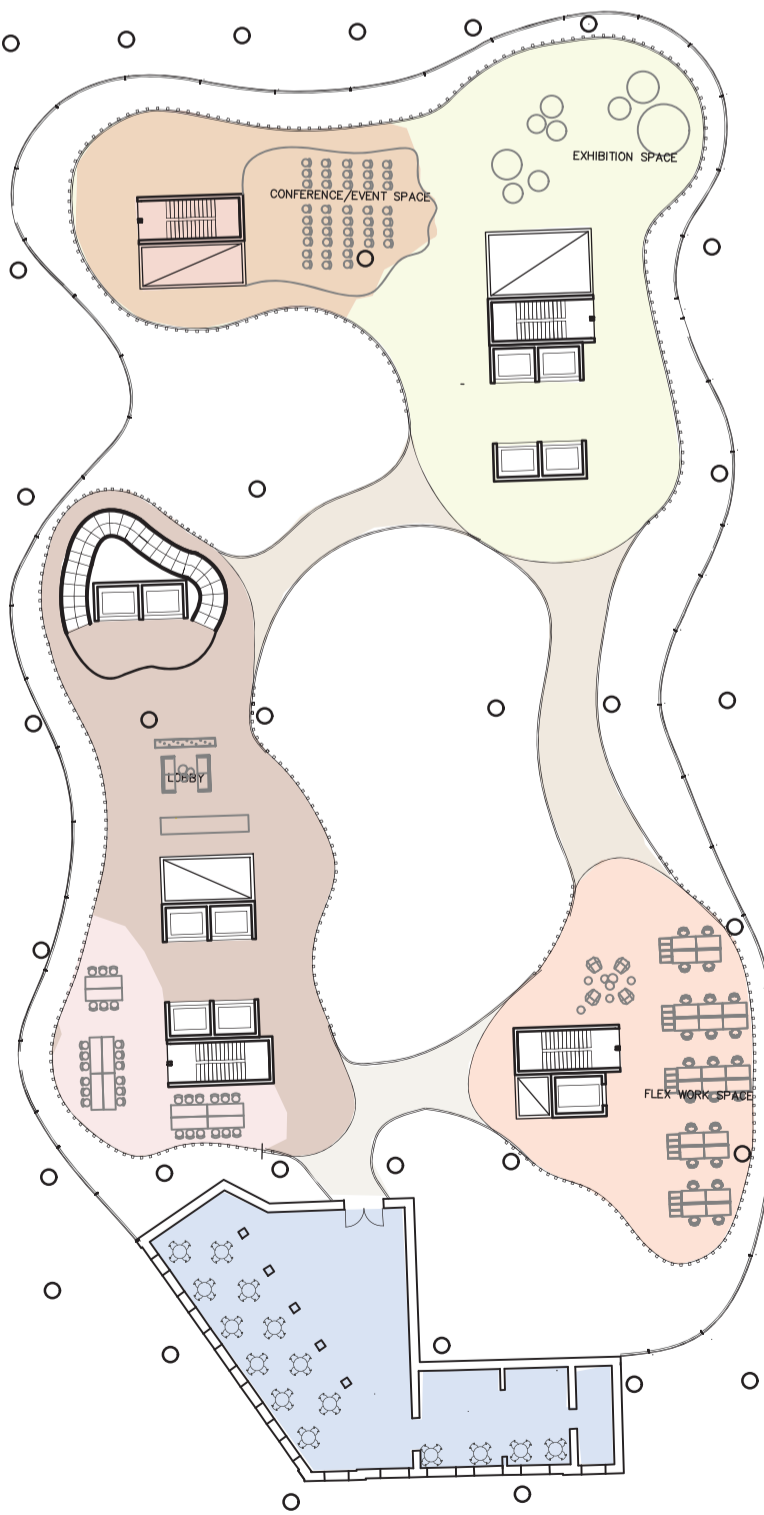
The maximum permitted envelope is transformed layer by layer to respond to context, functional

requirements and sustainability; in several places the façade is pushed back to create an elegant curvature. These setbacks allow more sunlight on the sidewalk, more daylight into the urban living room, they reduce the height of the building to align with the surrounding buildings, create space for a public roof garden and terraces for the offices, and they clearly mark the main entrances.

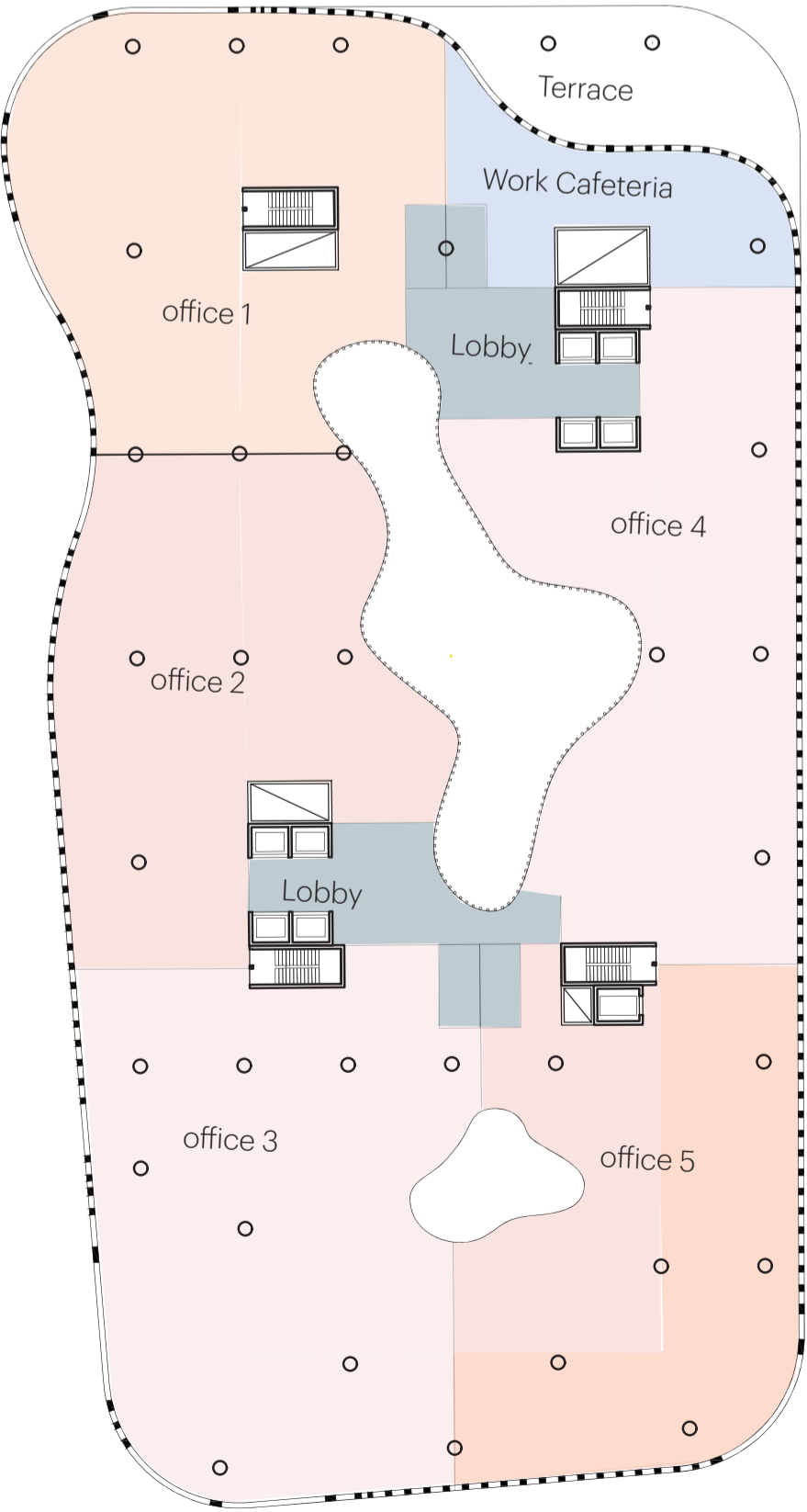
The building volume follows a smooth transition from an organically shaped public ground floor to a more rational and flexible typical office floor.



The volume is transformed layer by layer to respond to context, functional requirements and sustainability.



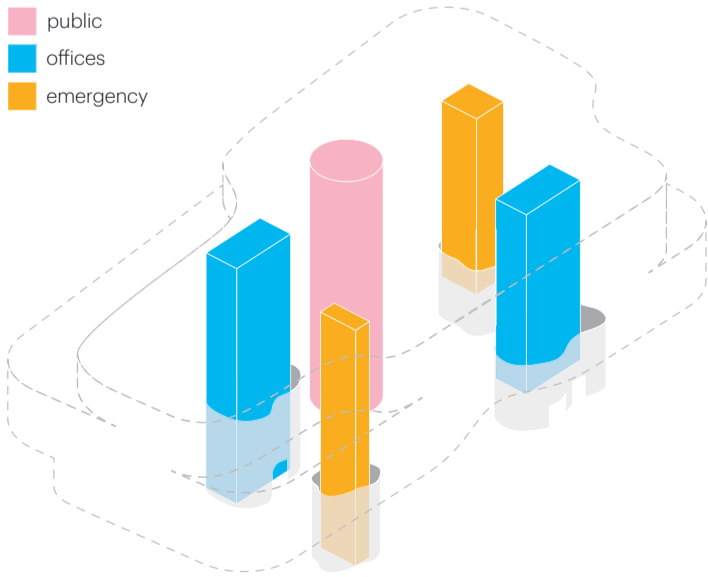
Shared facility floor (+12m) 1:500



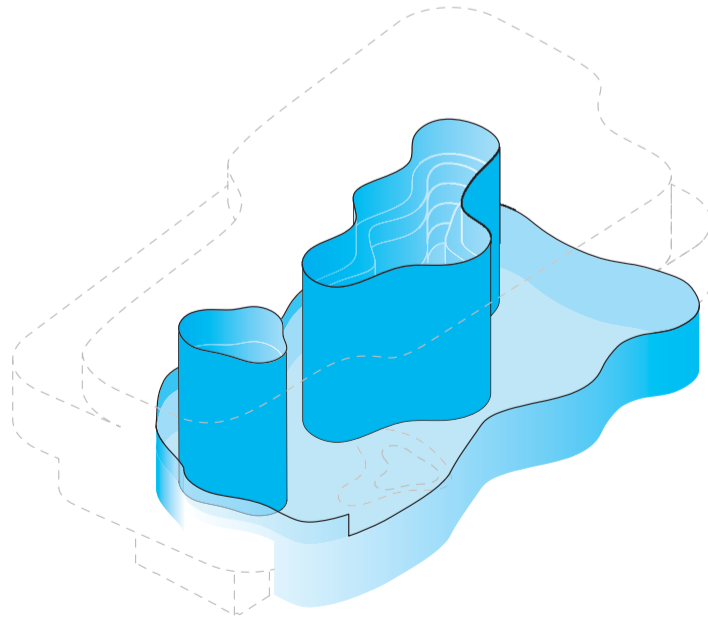
Typical office floor (4900 m2 GFA) 1:500



Main entrances and public routes



Vertical circulation



Semi-climatized public space and atria



Gardens and roof terraces

6 Elielinsaaristo
A contextual design

The architectural design of the building is inspired by the characteristics of Finnish architecture.

Exterior facade
Waste-based brick,
a high quality
sustainable product



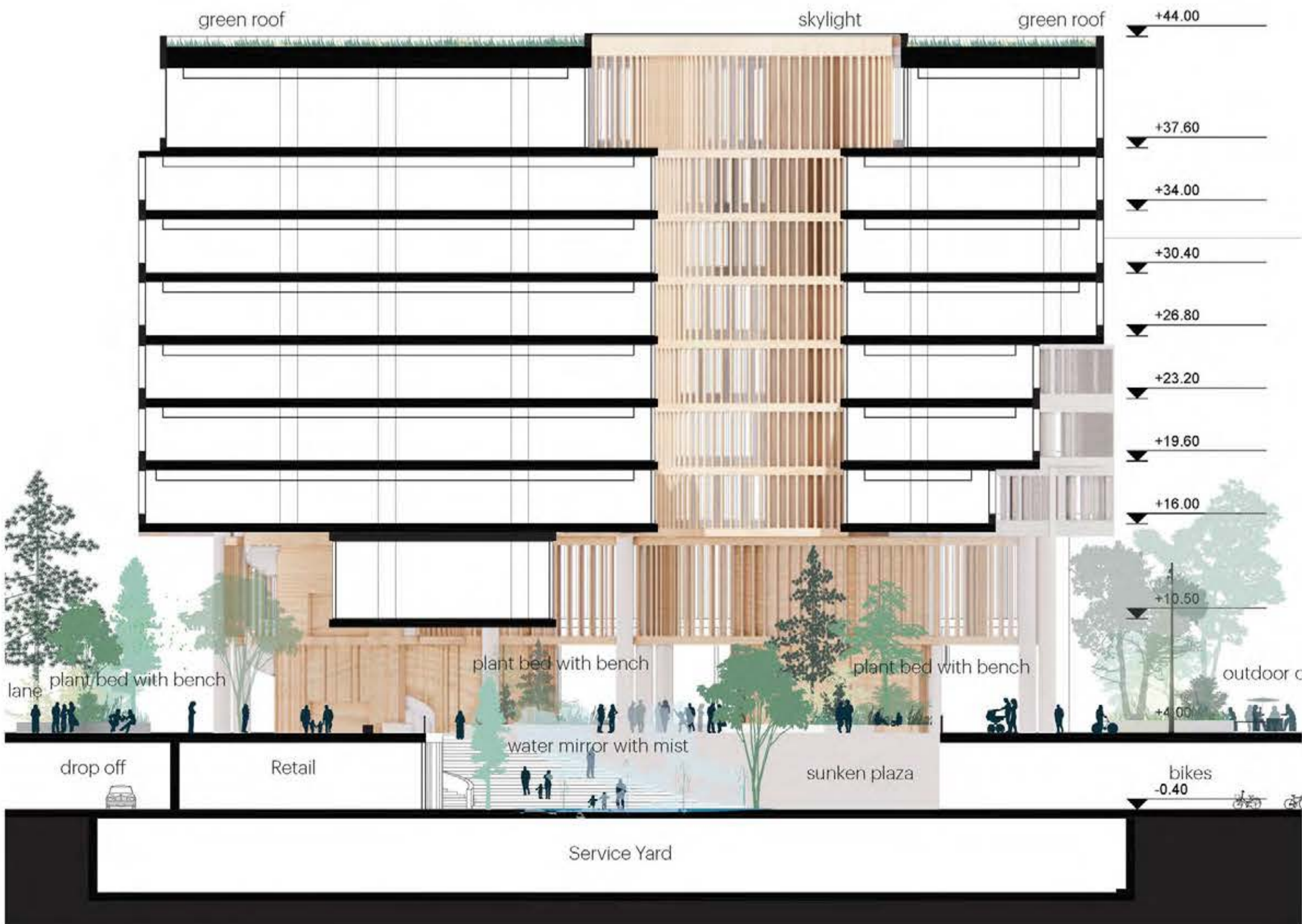
Interior facade
Locally sourced
timber cladding



South elevation 1:250



West elevation 1:250



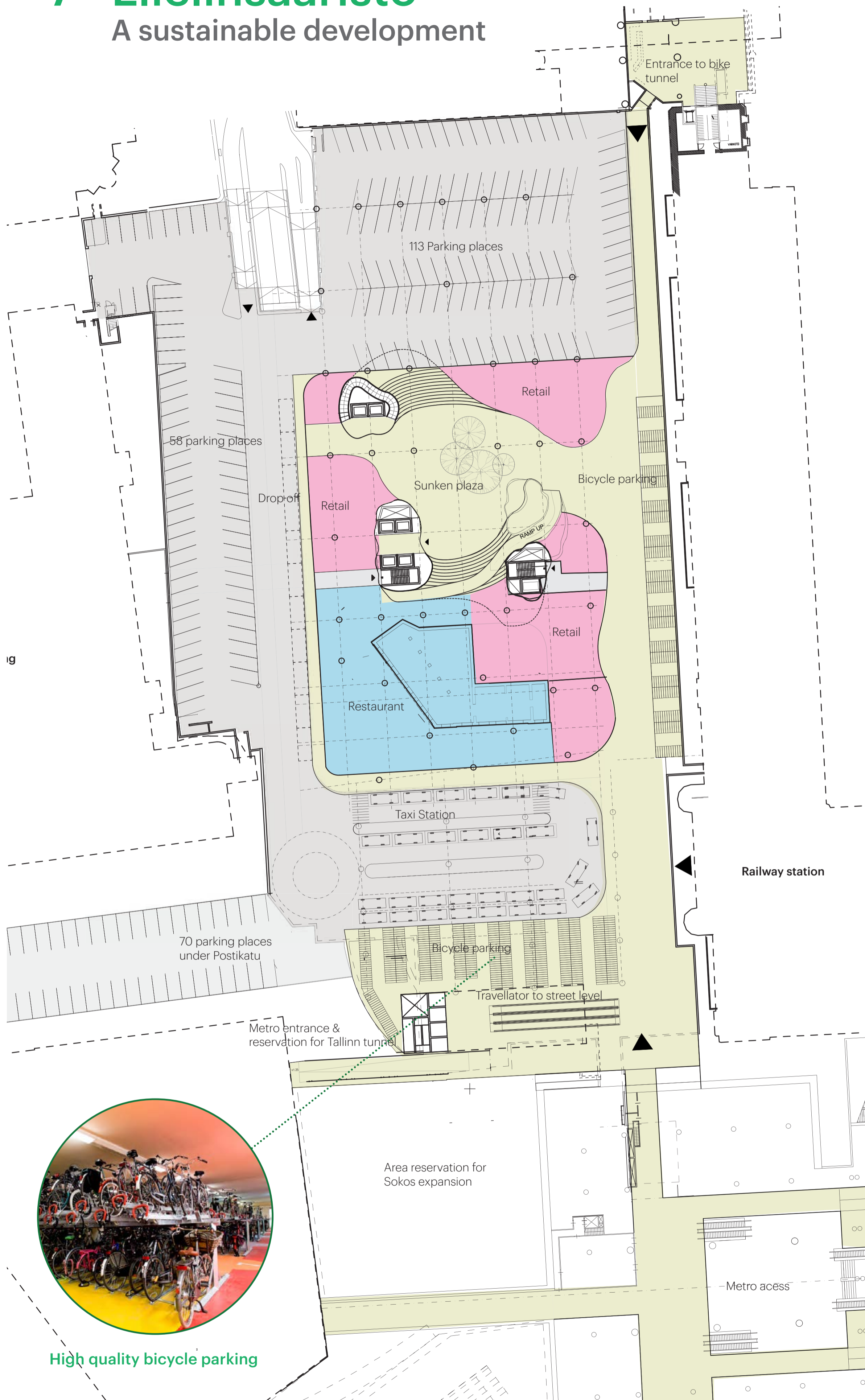
Longitudinal section 1:250



Cross section 1:500

7 Elielinsaaristo

A sustainable development



High quality bicycle parking

Basement plan 1:500

The building grid is fitted according to the existing foundations to enable new main foundations and piling in between the old existing ones. The hybrid building frame consists of composite steel columns, steel beams and long span hollow core slabs.



The project will contribute to a healthier, livelier and safer environment in every aspect of the design.

We believe this project should contribute to a healthier environment in every aspect of the design. The sustainability strategy for Elielinsaaristo is based on 3 main ambitions, which will be realized in evidence-based design:

1. The project contributes to Finland's ambition to decrease the carbon footprint.
2. The project proposes responsible use of commodities and contributes to Finland's bio-based economy.
3. The project generates social return of the building for the citizens of Helsinki.

The following aspects have been integrated as sustainable features of the design of public space and building volume:

A clear separation of pedestrian flows above ground and other modes of traffic

below ground (taxi, metro, parking). The archipelago design improves flows of people moving through the area and into the lower level. Electric bicycle sharing system on underground bicycle plaza will stimulate use of clean transportation.

High quality sustainable and locally sourced materials, such as upcycled waste-based bricks for the façade and timber interior cladding. Finnish granite pavement of the public space, also in the covered public space and underground level. Indigenous vegetation in the landscape, also in the covered public space, on terraces and the rooftop.

A large central atrium reduces depth of office floors, atrium brings daylight into ground floor public space. Vertical windows

allow maximum depth of daylight into the offices. Curved setbacks of the volume allow more daylight and sunlight into ground floor level and on the sidewalks surrounding the building. When not set back, the volume creates a generous drywalk along the perimeter of the entire building.

Cascading heating energy consumed by the offices into the atrium will provide comfortable indoor climate in the covered public space and basement. Modest window sizes increase insulation value of façade.

The building structure itself will reflect proven state of art construction techniques currently used in Finland. Prefabrication will be used in the construction as widely as possible to minimize waste and construction time and on the other hand

maximize quality and safety in construction. Finland is globally one of the forerunners in development and use of precast prestressed floor structures. With prestressed floor structures a lot environmental benefits can be achieved especially because of efficient use of the materials which brings also more light structures and foundations in challenging conditions.

The main stabilizing structures are the concrete cores including main elevator shafts, MEP shafts and stairs. The façade material is brick with light sub structure to enable maximum insulation and energy efficiency in the envelope of the building. The foundations are made of cast in situ concrete supported by drilled steel piles. Structurally the entire building is split with one expansion joint into two parts.



Area section 1:500